



GET BACK in ACTION FASTER

with Pegasus® Laser Therapy

Drug-Free | Surgery-Free | Non-Invasive | Fast-Acting | Pain Relief

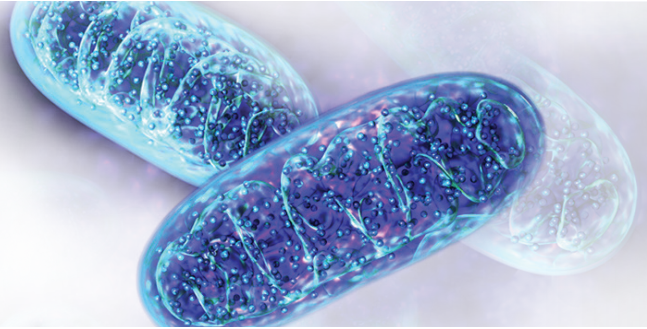


PEGASUS[®] LASER THERAPY

Drug-Free | Surgery-Free | Non-Invasive | Fast-Acting | Pain Relief

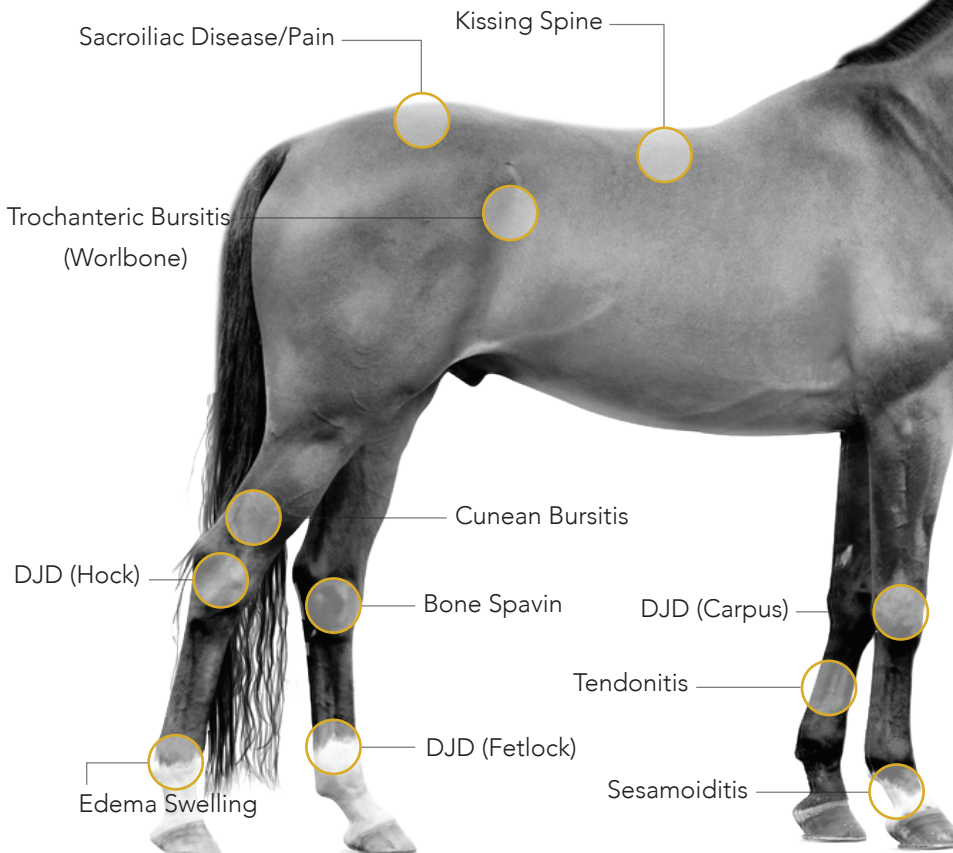
About Laser Therapy

Photobiomodulation therapy (PBMT) is a form of light therapy based on the photochemical process called photobiomodulation (PBM). This cascade of events at the cellular level relieves pain, reduces inflammation, and increases microcirculation. These three effects result in accelerated healing and restoration of function within the tissue.



Clinical Applications

Laser therapy treatment quickly becomes the preferred modality for both equine patients and athletes alike. It can effectively reduce pain and inflammation while accelerating healing for a variety of clinical conditions including:



Physiological Effects

- Anti-inflammatory, analgesic, and anti-edematous
- Increased tissue oxygenation and nutrition
- Increased synthesis of ATP
- Increased rate of tissue regeneration
- Increased microcirculation

Get back in Action with Pegasus® Laser Therapy



Benefits of the Deep Tissue Applicator

Maximize clinical results with the benefits of the patented Pegasus on-contact photobiomodulation therapy treatment applicator.



Compression

Gets you closer to target tissue. Blanching reduces obstacles of superficial absorbers.



Collimation

The deep tissue applicator acts to collimate the delivery of light to tissue, reducing energy loss.



Refractive Index

The fused silica composition of the deep tissue applicator minimizes loss of laser light as it passes from the applicator into the skin due to similar refractive indices.



Reflection

Contact application of delivery to tissue minimizes light loss due to reflection.



Soft Tissue

Allows you to do manual therapy with the deep tissue applicator while delivering energy.



SmartCoat⁺ Plus Technology

Pegasus Lasers feature innovative SmartCoat⁺ Plus Technology. This pioneering software automatically calculates a recommended dosage by taking into account your patient's condition, body type, coat length, coat color, and skin color.

This comprehensive consideration of your patient's characteristics results in customized treatment protocols designed specifically to meet the needs of each patient.



PTC



PTX

Pegasus® Laser Therapy



PTC 15 watts

Laser Type: Class IV, Solid State
Wavelengths: 980/810 nm
Operating Modes: CW or Pulsed
Dimensions: 14"x9"x6"
Weight: 7 lbs
Warranty: 36 months



PTX 15 watts

Laser Type: Class IV, Solid State
Wavelengths: 980/810 nm
Operating Modes: CW or Pulsed
Dimensions: 15"x9"x6"
Weight: 9 lbs
Warranty: 36 months
Delivery System: Empower IQ (Optional)
Software Features:

- Patient Tracker
- Treatment Head Recommendations

Mobile

Convenient shoulder pouch and long-life battery pack ensure that quality care is available anytime, anywhere.

Powerful

The Pegasus Therapy Laser can deliver up to 15 watts of continuous power, assuring effective, deep, and efficient treatment of equine patients.

Durable

The laser system, delivery fibers, and treatment handpieces are designed for demanding and mobile applications. All components are covered with a three-year warranty.

Easy

Intuitive touch screen offers preset protocols displaying calculated dosages for common conditions.

Intelligent

SmartCoat® Plus Technology and a comprehensive built-in treatment protocol library based on clinical studies assure unparalleled care.

Support

On-going clinical support, client education, overnight service capability, thorough training and online CE. Software updates, and technical support from our Delaware factory make Pegasus Therapy Laser the first choice in equine medicine.